

# One Bay SATA/IDE Turbo NAS

# User Manual



Revision: v0117

Date: 2009/07/23

For firmware version v1.17

## Table of Contents

<b>1. Introduction .....</b>	<b>3</b>
<b>1.1. Key Features.....</b>	<b>3</b>
<b>1.2. Network Environment .....</b>	<b>3</b>
<b>2. Hardware Installation .....</b>	<b>5</b>
<b>3. Search Turbo NAS by SyncQuick™ NAS Manager .....</b>	<b>8</b>
<b>3.1 Format the Hard Disk .....</b>	<b>9</b>
<b>4. Configuration.....</b>	<b>10</b>
<b>4.1. Identification.....</b>	<b>10</b>
<b>4.2. Date/ Time setting .....</b>	<b>11</b>
<b>4.3. IP Configuration.....</b>	<b>11</b>
<b>4.4 Disk Utility .....</b>	<b>12</b>
<b>4.5 Maintenance.....</b>	<b>13</b>
<b>5. SAMBA Server (SMB).....</b>	<b>15</b>
<b>5.1 How to crate user .....</b>	<b>15</b>
<b>5.2 How to modify account password .....</b>	<b>18</b>
<b>5.3 How to delete a SMB (SAMBA) account.....</b>	<b>19</b>
<b>6. FTP Server.....</b>	<b>21</b>
<b>6.1 How to crate FTP account.....</b>	<b>21</b>
<b>6.2 How to delete FTP account.....</b>	<b>22</b>
<b>7. XBOX 360 UPnP Media server.....</b>	<b>23</b>
<b>8. Printer Server.....</b>	<b>25</b>
<b>9. Bit Torrent server.....</b>	<b>30</b>
<b>10. Mac installations (Mac 10.5.4 or above).....</b>	<b>33</b>
<b>11. Map your Turbo NAS as a Network Drive .....</b>	<b>36</b>
<b>12. Q&amp;A.....</b>	<b>37</b>

## 1. Introduction

Thank you for purchasing One BAY IDE+SATA Turbo NAS. Now you can easily add our Turbo NAS into your Network. Before using this device please read the Key Features below.

### 1.1. Key Features

- Support both SATA/ IDE 3.5" hard disk
- Support Auto IP (DHCP server or DHCP Client)/ Fixed IP
- Under network environment, it supports one 10/100Mbps Ethernet port
- Password management provides secure access to HDD and web management
- Support SAMBA (SMB)
- Support FTP server
- Support Bit Torrent download server
- Support UPNP AV media & Apple i-Tunes music server
- Support USB Printer server
- Compatible with Windows 2000/XP/VISTA, Mac 10.5.4 above

One BAY IDE+SATA Turbo NAS is a flexible, economical and powerful unit for your network. Follow the instructions below which will help you to connect, to set up, and to configure it.

### 1.2. Network Environment

There are 3 different setup conditions you can choose:

#### 1. Setup Turbo NAS as DHCP Client:

If your Turbo NAS operates under a built-in DHCP server router (ex. Internet Sharing Hub), it will obtain an IP from DHCP Server automatically.

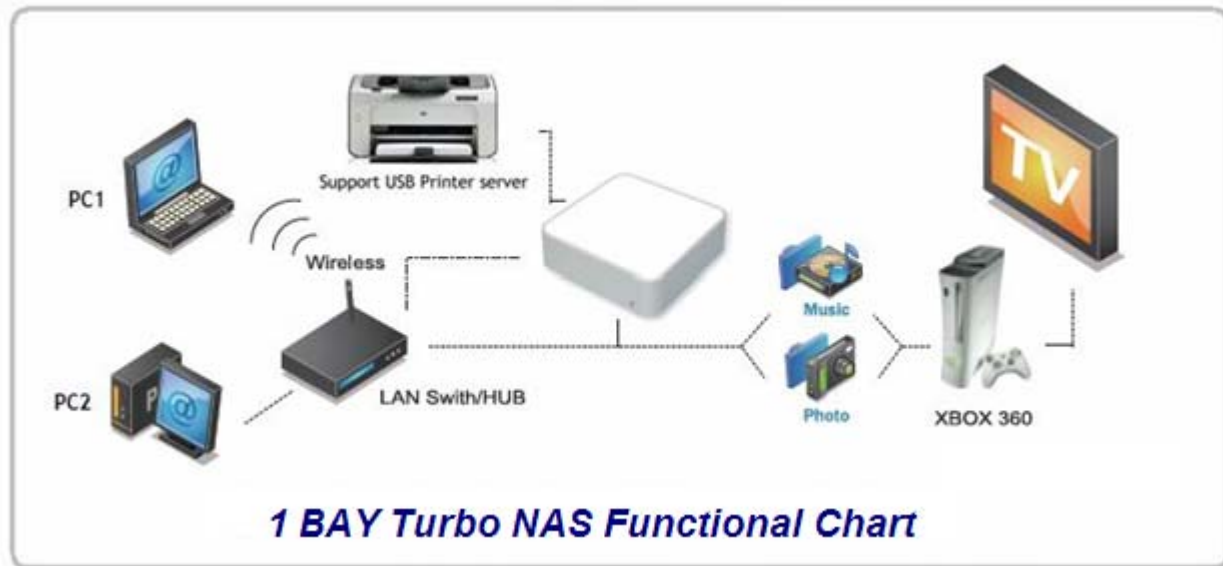
#### 2. Setup Turbo NAS as DHCP Server:

If your operating environment does not support DHCP server, Turbo NAS will immediately act as DHCP server and assign an IP for installation.

#### 3. In Static IP environment:

You need first configure the IP for Turbo NAS to operate in the static IP environment. for configuring details, please refer to "IP Configure" setup page.

## One Bay SATA/IDE Turbo NAS



## 2. Hardware Installation

Step1. Remove 4 screws form the bottom case.



Step2. Remove the upper case



Step3. for IDE Hard Disk make sure jumper is in the Master Mode.



Step4. Place the Hard disk in to 3.5" tray.



Step5. Connect both IDE cable and power cable in to Hard Disk.



For SATA HDD please connect both SATA cable and SATA Power cable.





## One Bay SATA/IDE Turbo NAS

Step6. Use hand Screw to fix both side of Hard Disk.



Step7. Slowly closing both case.



Step8. If the case cannot match to correct position, please adjust the Hard disk position again until both case fits.



Step9. Tighten up four screws from bottom plate

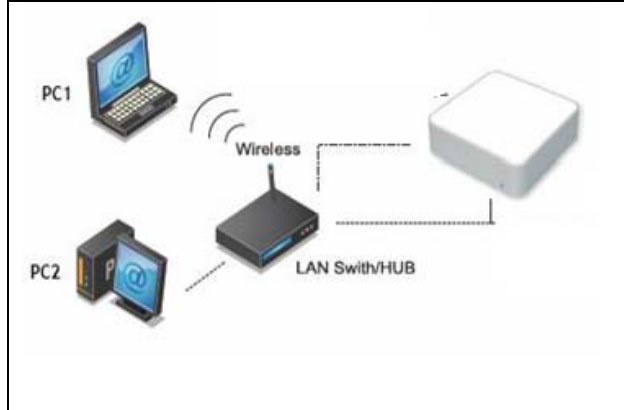


Step10. Stick 2 rubber foot on the bottom case for more protection



## One Bay SATA/IDE Turbo NAS

Step11. Connect RJ45 LAN cable between LANDISK and LAN hub or Router.



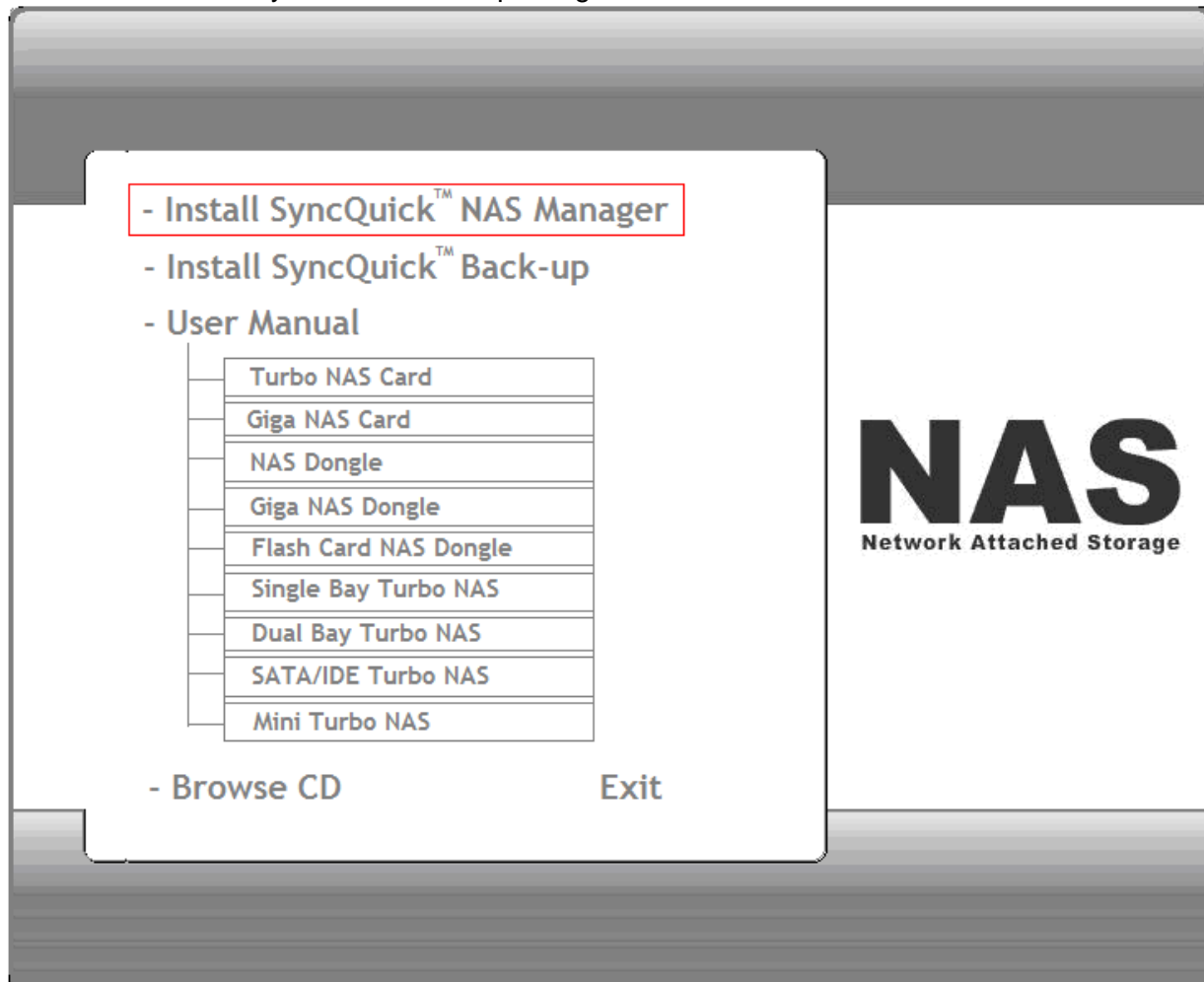
Step12. Connect power adapter and turn the power "on", hardware installation completed.



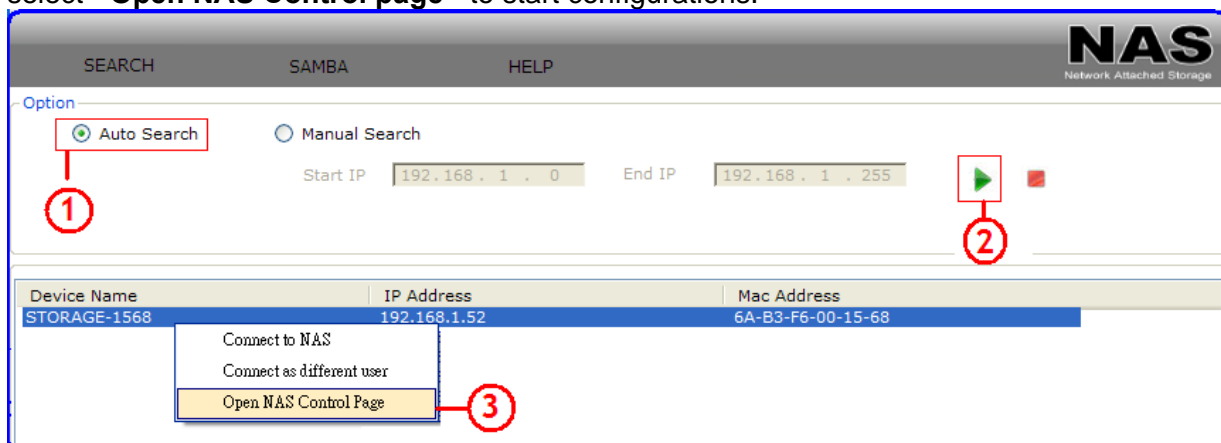
If you connect Turbo NAS to your computer directly, make sure to obtain the IP address and DNS settings automatically, otherwise you may not be able to find the device.

### 3. Search Turbo NAS by SyncQuick™ NAS Manager

1. Run the utility CD enclosed in package.

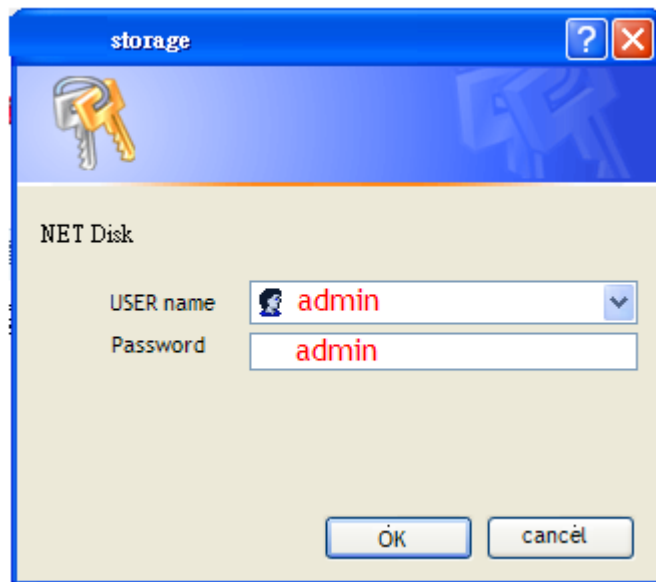


2. Select Auto Search and when Turbo NAS is found, right click the mouse button and select "**Open NAS Control page**" to start configurations.



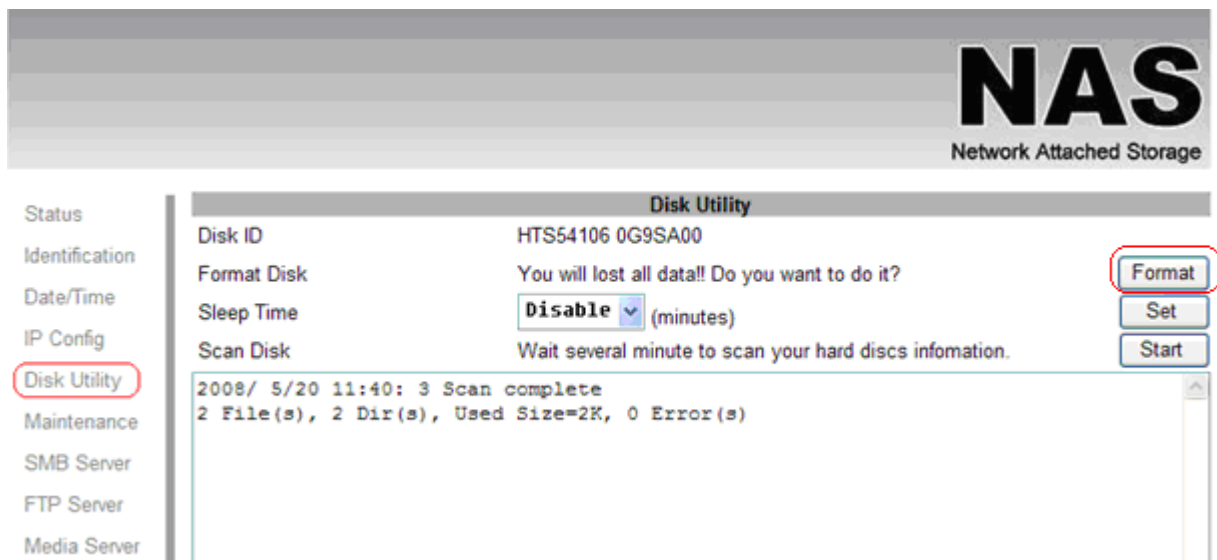
3. Default login is "**admin**" for both user name and password, click "**OK**" to enter configurations.





### 3.1 Format the Hard Disk

For the first time installation, you need to format hard disk into **FAT32** system file, this procedure applies to either new or used hard disk.



## 4. Configuration

The Status page provides the basic information for Turbo NAS.

Identification	
Host Name	STORAGE-000B
Group Name	WORKGROUP
Administrator	admin

Date and Time	
Date	2008/05/20 16:52:28 GMT8

Disk Usage & Firmware	
Firmware Version	CR1618-1.11 LOADER 3.3
Free Size	57209 MB free
Total Size	57231 MB

### 4.1. Identification

You can change and modify your host & group name, and password from this page. Click **"Apply"** to save the setting.

- **Host name:** This is used to identify your device on the network. If you prefer a different name, type in the new name and click **"Apply"** to save setting.

- **Group Name:** This should be same as your workgroup. In general, the default **"WORKGROUP"** will be OK. But if your workstation belongs to different workgroup, type in the correct group name to modify.

In Window O/S, right click on **"My computer"**, choose **"Properties"**, and go to the computer name tab to see your current workgroup.

For Mac O/S to join windows workgroup, open the directory access utility (under Applications->utilities), select SMB and click configure to modify the settings (administrator access required to access this option.)

**Note:** we strongly suggest you to change the password as soon as you logged in, to prevent unauthorized access.

The screenshot shows the NAS configuration interface. The top header displays 'NAS' and 'Network Attached Storage'. On the left, a sidebar lists navigation options: Status, Identification (highlighted with a red box), Date/Time, IP Config, Disk Utility, Maintenance, SMB Server, FTP Server, and Media Server. The main content area is divided into two sections. The 'Identification' section contains fields for 'Host Name' (set to 'STORAGE-000B') and 'Group Name' (set to 'WORKGROUP'), with an 'Apply' button. Below these fields are two red notes: 'Note. First character can not be number (0~9).' and 'Note2. Host & Group name maximum is 15 bits.'. The 'Administration' section contains fields for 'Administrator' (set to 'admin'), 'Password', and 'Verify Password', with an 'Apply' button. A red note below this section states: 'Note3. password maximum is 20 bits.'.

## 4.2. Date/ Time setting

You can change time setting from this page. Clicks “**Apply**” to save the setting. By default SNTP is in network time service, your can also select “Synchronize to PC”. If internet access is available we recommended setting SNTP to Network time service instead.

The screenshot shows the 'Date and Time Config' page in the NAS interface. The top header displays 'NAS' and 'Network Attached Storage'. The left sidebar lists navigation options: Status, Identification, Date/Time (highlighted with a red box), IP Config, Disk Utility, Maintenance, SMB Server, FTP Server, and Media Server. The main content area is titled 'Date and Time Config'. It shows the 'System's Date' as 'Tue May 20 16:50:42 UTC+0800 2008'. Under the 'SNTP' section, there are two radio buttons: 'Network Time Service' (selected) and 'Synchronize to PC'. Below the 'Network Time Service' option, the 'Time Server' is set to 'clock.isc.org' in a dropdown menu. There is an empty text box below the dropdown. An 'Apply' button is located at the bottom right of the configuration area.

## 4.3. IP Configuration

By default, the “IP config” is set to “Automatic IP”. This is the recommended setting and will allow Turbo NAS to obtain its IP address automatically. If you prefer setting it manually, select the static IP option, enter your own value and click apply to confirm the new setting.

Setting it manually is useful when it often obtain a different IP address but you have a static IP address in order to mount the network drive or setup port forwarding as an example.

NAS

Network Attached Storage

Status

Identification

Date/Time

IP Config

Disk Utility

Maintenance

SMB Server

FTP Server

Media Server

IP Config

☐ Automatic IP

☒ Static IP as below

IP

192.168.1.121

SubnetMask

255.255.255.0

Gateway

192.168.1.254

Primary DNS

168.95.192.1

Secondary DNS

168.95.1.1

Apply

DHCP Config

DHCP server

Off ☐ Enable ☒ Disable

Apply

MAC address

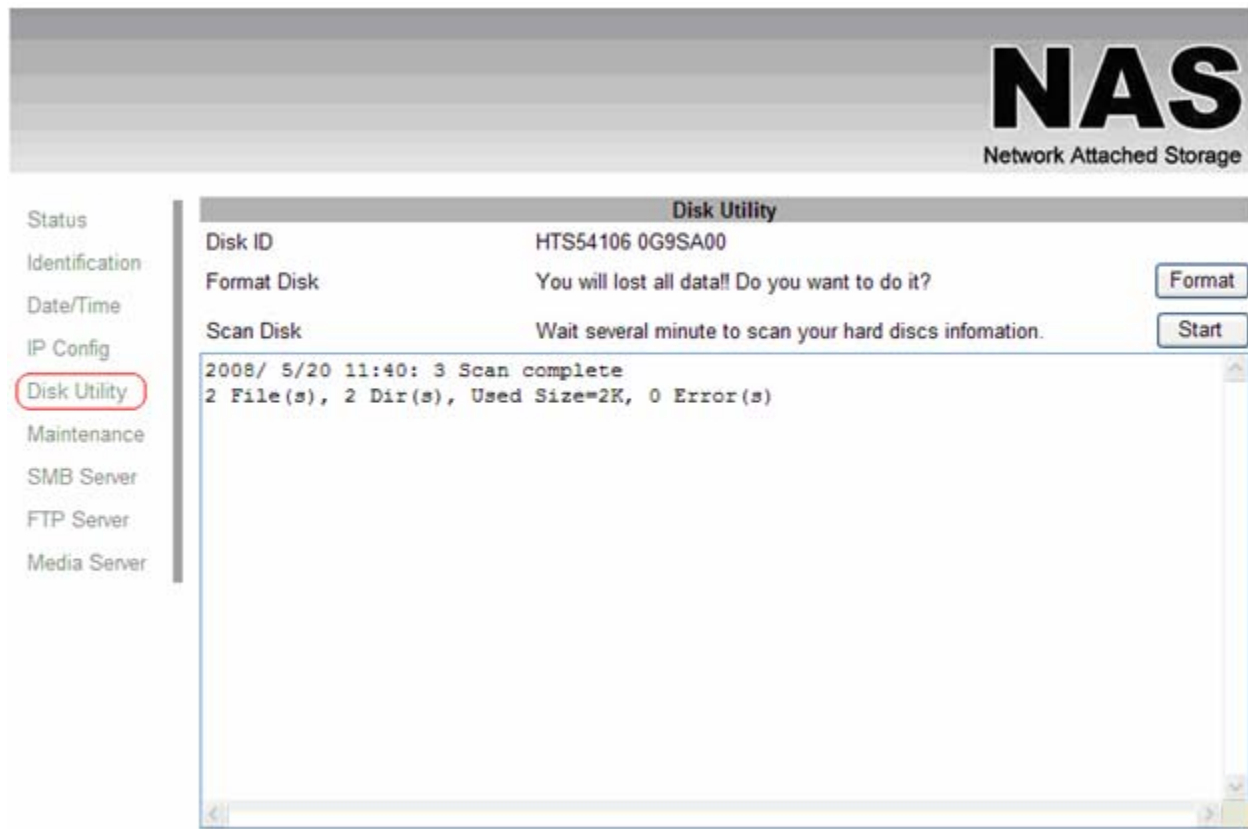
7A:B5:F6:00:00:0B

## 4.4 Disk Utility

In this page, you can manage the hard disk setting.

- **Format:** For the first time installation, you need to format hard disk into **FAT32** system file, this procedure applies to either new or used hard disk.

- **Scan Disk:** After the scan, it will show the number of file content and health status for the hard disk.



## 4.5 Maintenance

This page allows you to update Turbo NAS firmware, to go back to default setting or to reboot NAS system.

- **Firmware update:** Follow the steps below to update the loader and firmware for Turbo NAS.

1. Obtain the latest firmware from your vendor.
2. Store the firmware file in your computer and decompress it if necessary.
3. Browse your system and locate the firmware (BIN file).
4. Click on "upload".
5. Confirm the pop-up message to start the update.
6. Wait and DO NOT click anywhere else or turn off the power! This might take a few minutes.
7. Once the update is done, it will prompt you to reboot the device.
8. Click on "reboot" to restart the device.
9. Wait for about one minute and then go to the status page to confirm the update is successful.

- **Factory defaults:** Forgot your admin password?? Click on the factory defaults and go back to the default password setting. Besides SAMBA/FTP account setting will still remain in the Turbo NAS, rest of setting will go back to factory default.

- **System reboot:** This can be used to restart the network drive after a firmware update.

**NAS**  
Network Attached Storage

Status

Identification

Date/Time

IP Config

Disk Utility

**Maintenance**

SMB Server

FTP Server

Media Server

**Firmware Upload**

Select new firmware to update.

瀏覽...

Update

**Factory Defaults**

Click "Reset" to clear all configuration and restore to default settings.

Reset

**System Reboot**

Click "Reboot" to have the device perform a software restart.

Reboot



## 5. SAMBA Server (SMB)

SMB server allows you to share data or files through LAN environment. A default “guest” folder is created and shared to all users from Turbo NAS.

**Note:** Use **ONLY English** alphabet for folder names and no special characters when creating new folders.

**NAS**  
Network Attached Storage

**SMB Server**

SMB Status ☒ ENABLE ☐ DISABLE Apply

**Account List**

User Name	Password	Access	En / Disable
Guest	-----	RW	ENABLED

Add Modify Delete En/Disable

### 5.1 How to create user

Click on the “**Add**” button. Type new account name, password and click “**OK**”.  
Eg: “User1” for demonstrations.

**SMB Add Account**

Account Name

Password

Access ☐ Read Only ☒ Read/Write

Note. account name&password maximum is 12 bits.

OK Cancel

## One Bay SATA/IDE Turbo NAS

In the same time, Turbo NAS will also crate a SAMBA folder named “User1”, click **“Modify”** to share the folder.

**NAS**  
Network Attached Storage

Status  
Identification  
Date/Time  
IP Config  
Disk Utility  
Maintenance  
**SMB Server**  
FTP Server  
Media Server

**SMB Server**

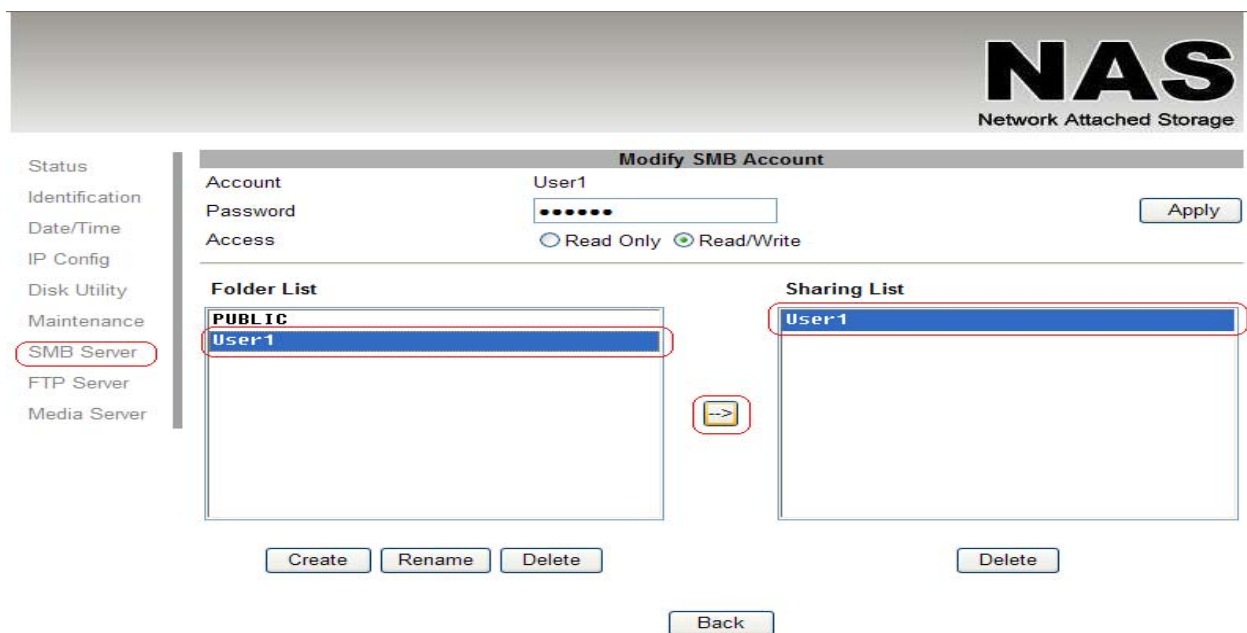
SMB Status ☒ ENABLE ☐ DISABLE Apply

**Account List**

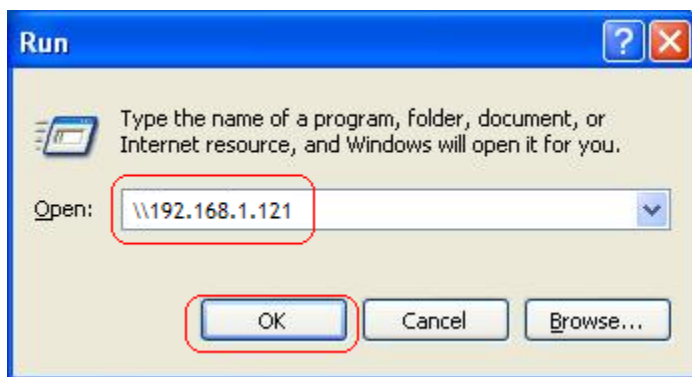
User Name	Password	Access	En / Disable
Guest	-----	RW	ENABLED
User1	*****	RW	ENABLED

Add Modify Delete En/Disable

Select “User1” and add it into “Sharing List”.



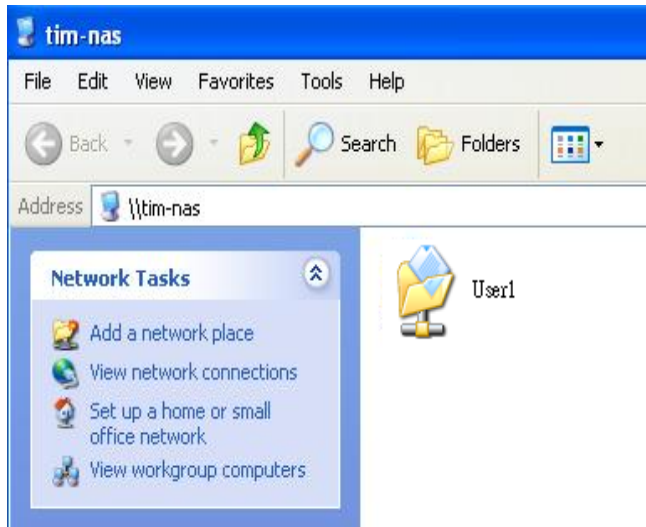
You can “Run” from window start button, type \\ follow by the IP address (eg:\\192.168.1.121), and click “OK” to continue.



Type “User1” and password to login.

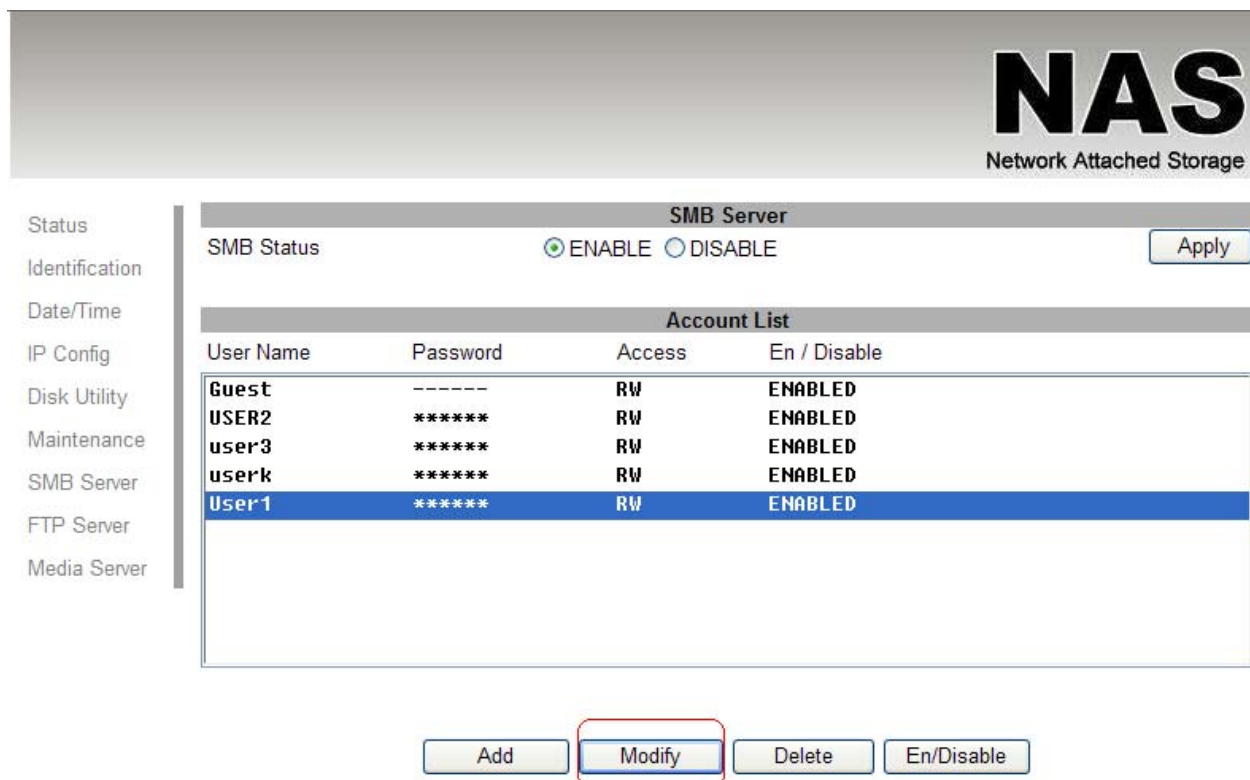


Now you have set up the folder that you wish to share on your Turbo NAS. The shared folder can be accessed from other computer on your local network.



## 5.2 How to modify account password

Select the “User1” and then click “**Modify**”.



Enter new password and click “**Apply**” to save setting.

# NAS

Network Attached Storage

- Status
- Identification
- Date/Time
- IP Config
- Disk Utility
- Maintenance
- SMB Server
- FTP Server
- Media Server

## Modify SMB Account

Account	User1	
Password	••••	<input type="button" value="Apply"/>
Access	<input type="radio"/> Read Only <input checked="" type="radio"/> Read/Write	

### Folder List

- PUBLIC
- USER2
- user3
- userk
- User1

### Sharing List

- User1
- PUBLIC

### 5.3 How to delete a SMB (SAMBA) account

Select an account you wish to delete, click “**Delete**” to proceed. Please note that all the data inside the folder will be lost after the delete.

# NAS

Network Attached Storage

- Status
- Identification
- Date/Time
- IP Config
- Disk Utility
- Maintenance
- SMB Server
- FTP Server
- Media Server

### SMB Server

SMB Status ☒ ENABLE ☐ DISABLE Apply

### Account List

User Name	Password	Access	En / Disable
Guest	-----	RW	ENABLED
USER2	*****	RW	ENABLED
user3	*****	RW	ENABLED
userk	*****	RW	ENABLED
User1	*****	RW	ENABLED

**Microsoft Internet Explorer**

Selected account will be deleted!  
Are you sure?

OK Cancel

Add
Modify
Delete
En/Disable



## 6. FTP Server

Remember to “Enable” the FTP service on the status page, when you plan on using the FTP server.

- **FTP server configuration:** The standard port for FTP service is 21. If required, you can change it into any port ranging from 1025-6550. But in general, we recommended using the default port of 21.

- **File language support:** By default, the encoding is set to English. If you want to store or transfer files with a different encoding (different language), choose the corresponding language from the drop down list. **In order to transfer and view the files correctly, it is important that you select the correct language!**

- **Anonymous:** By default an anonymous user name has been created, it allows FTP users to login without username and password. For security reasons, it is best to add a password!

**Note:** To be able to share FTP resource via internet, you need a router to assign the external IP to your Turbo NAS. Contact your router vendor on how to assign the external IP.

**NAS**  
Network Attached Storage

Status  
Identification  
Date/Time  
IP Config  
Disk Utility  
Maintenance  
SMB Server  
**FTP Server**  
Media Server

**FTP Configuration**

FTP Status: ☒ ENABLE ☐ DISABLE [Apply]

Port: 21 [Apply]

File Language support: Traditional Chinese(cp950) [Change]

Note. Port set either from 1025 to 65500 or 21.

User Name	Password	Access	En / Disable
anonymous		RO	ENABLED
rick	*****	RW	ENABLED

[Add] [Modify] [Delete] [En/Disable]

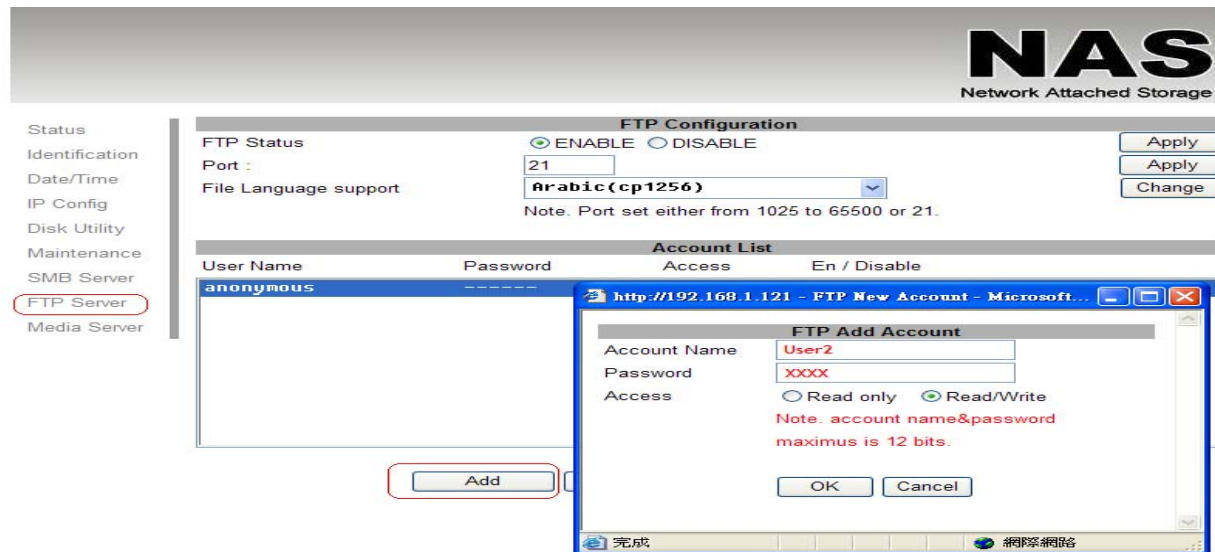
### 6.1 How to create FTP account

FTP server allows you to share your data through internet, so an internet resource and router is required before setting up FTP server.

Select FTP server and clicks “add” button and enter a name and password for the new FTP account and click “OK”. to continue.

In the account list, you can see an overview of the existing accounts and status. For FTP file transfers, we recommend to use other dedicated FTP client software e.g.: SyncQuick FTP, Cute FTP etc.

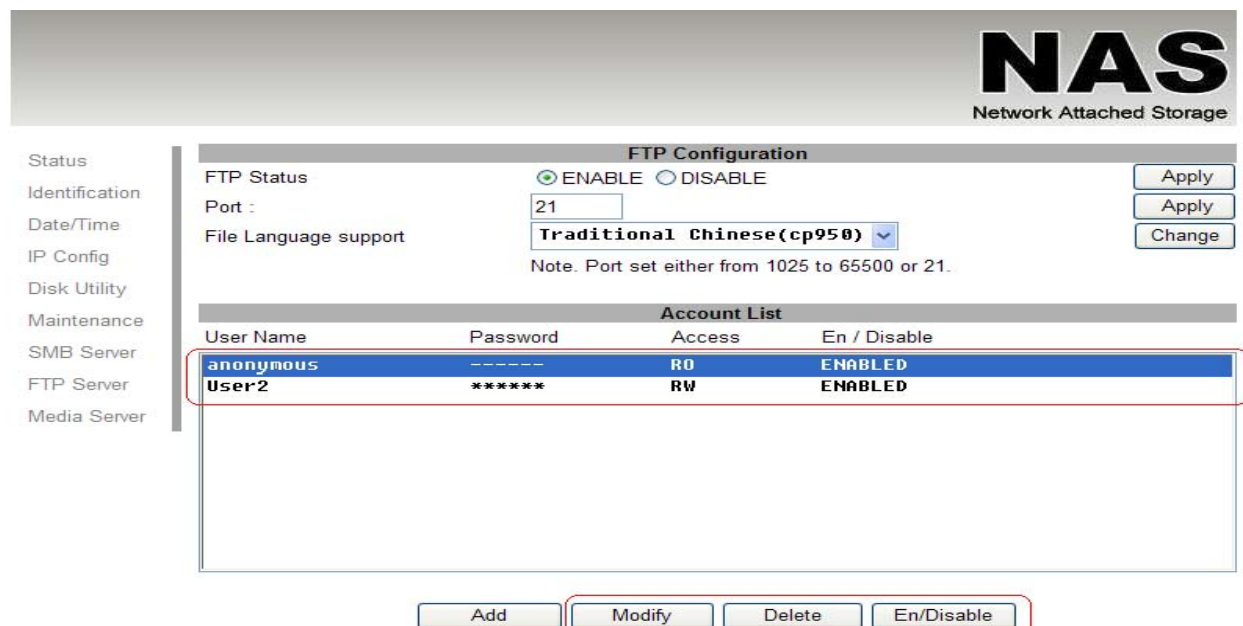
**Note:** When creating FTP accounts, please use ONLY English alphabet and no special character or space for FTP account name.



## 6.2 How to delete FTP account

In the "Account List", you can see an overview of the existing account and status; you can change them at any time by selecting the account and modifying, disabling or deleting it.

**Note:** Deleting a folder will also erase all the files stored inside that folder.

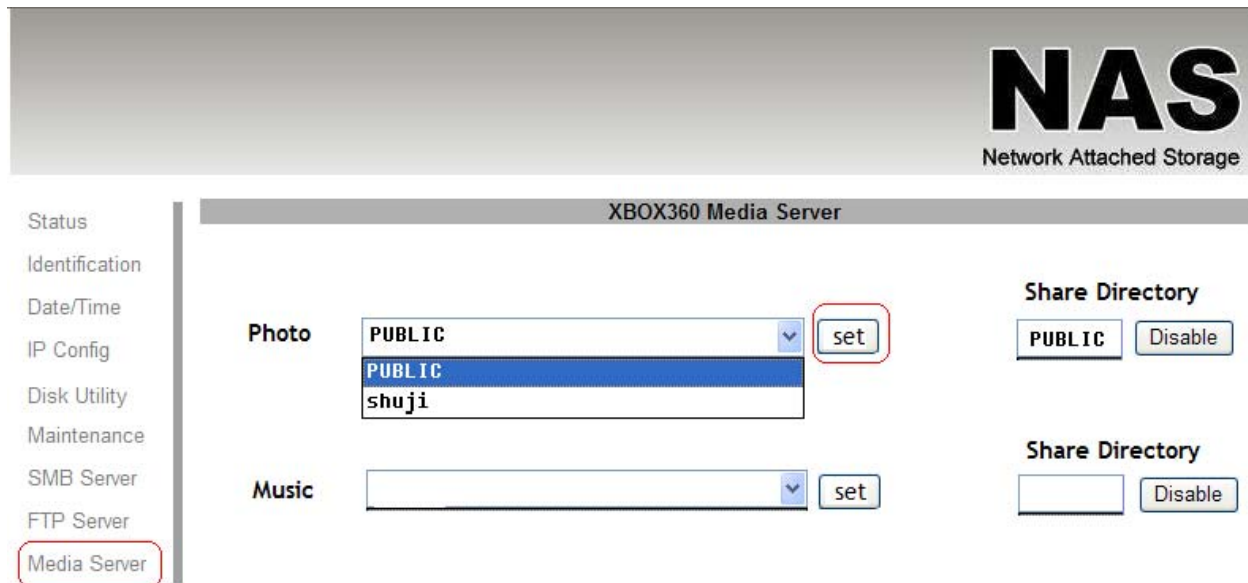


## 7. XBOX 360 UPnP Media server

The Media server on Turbo NAS can be used to share your photo and music files with a XBOX360 video game console from Microsoft that is connected to the same local network.

Before you start, make sure both devices are connected to the same local network and turned on.

On your Turbo NAS, go to the XBOX360 media page and make sure photo and are set to share folder and not disable, e.g. the “**PUBLIC**” is enabled Photo directory.

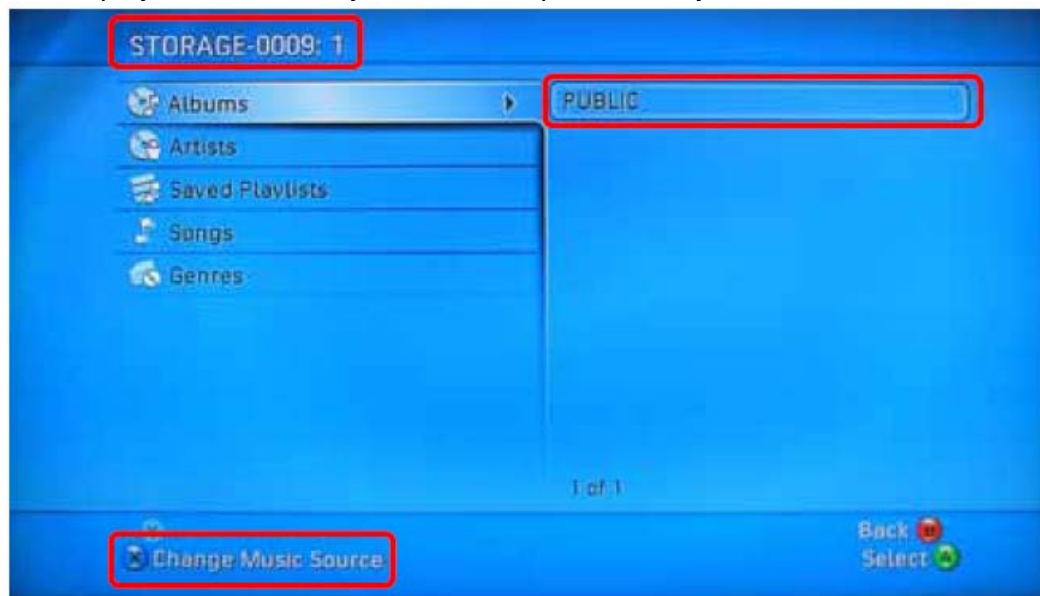


Go to media, select either Music or Pictures, and press **A** to continue on your XBOX 360.



## One Bay SATA/IDE Turbo NAS

Press **X** to change the source and select your network drive, it should show up as storage-xxx and display the folder that you have set up earlier on your Turbo NAS.

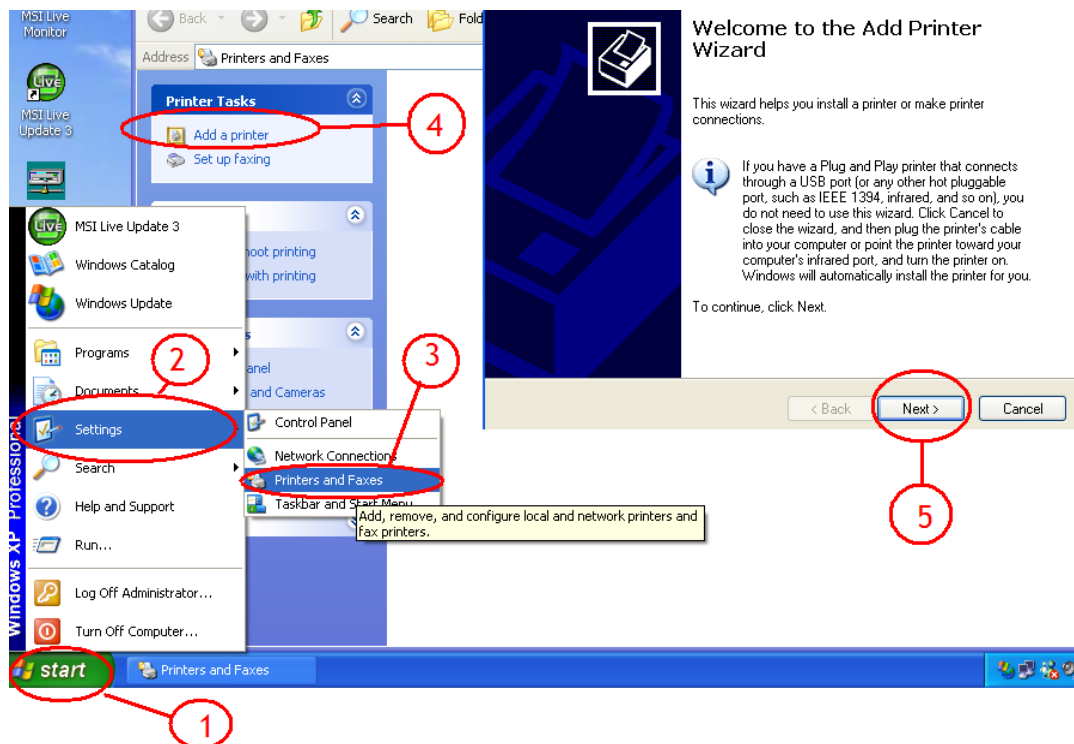


Inside the shared folder, you can access to your picture or music files, depending on which mode you are currently using. Select the files you would like to see or to listen, and start playback.

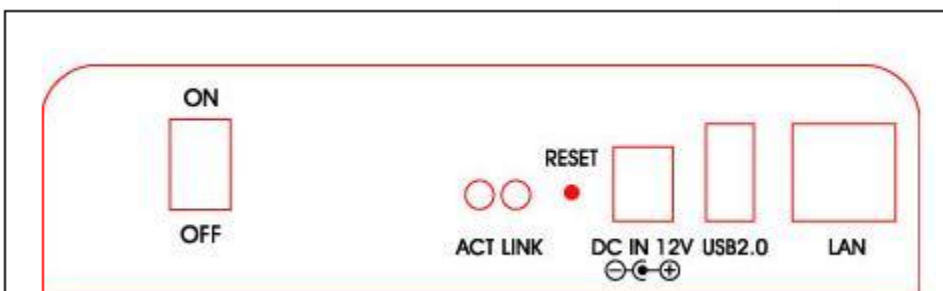


## 8. Printer Server

1. First, install your Printer driver into your computer, (for example. if Epson PL-6200L Printer is connected to the NAS, you must install PL-6200L driver into your computer first). After driver installation, please click **“Start”** → **“Setting”** → **“Printer and Faxes”** → **“Add a printer”** → **“Next”**.

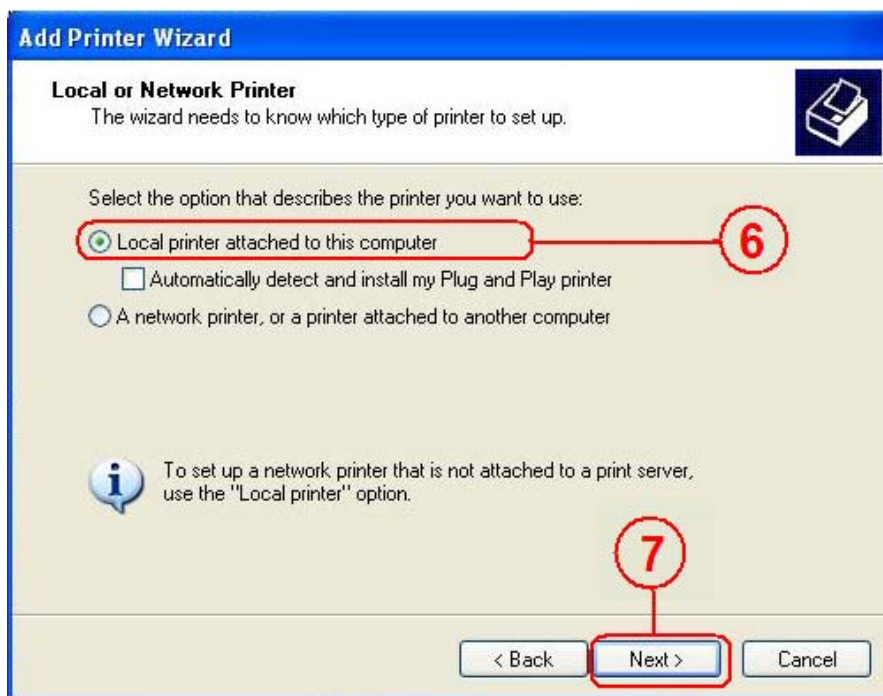


2. Connect the USB printer to Turbo NAS. (there is an available USB port behind the NAS)

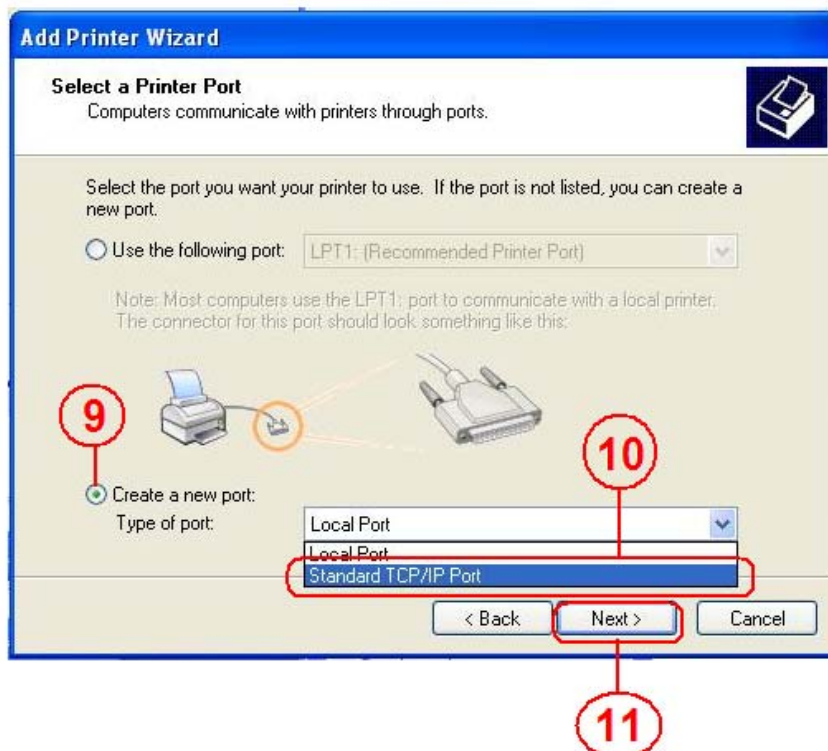


3. Go to **“Add Printer Wizard”**, select **“Local printer”** and click **“Next”** to continue.



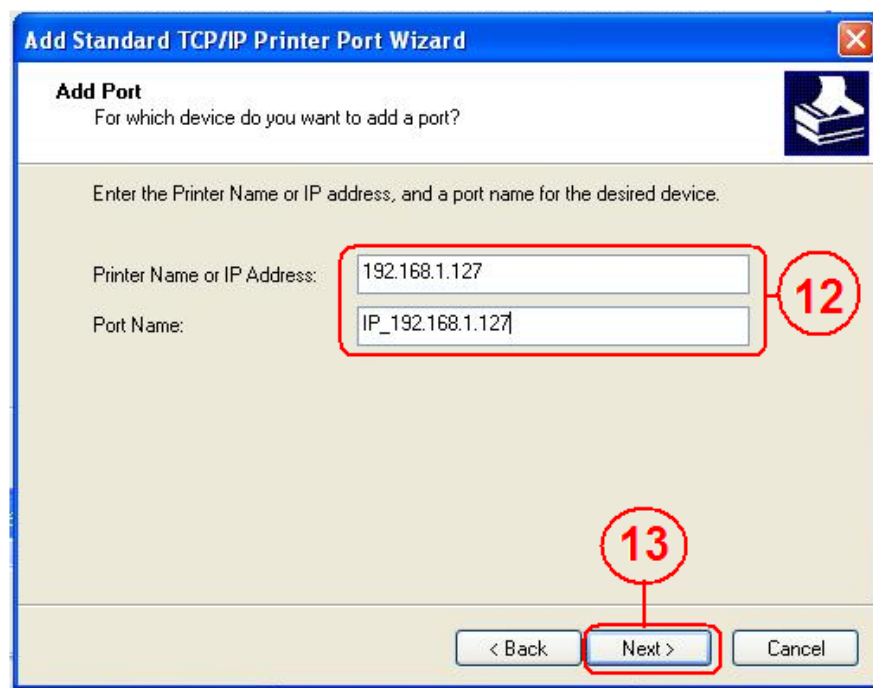


4. Select **"Create a new port type of port:"**, choose **"Standard TCP/IP Port"**, and click **"Next"** to continue.

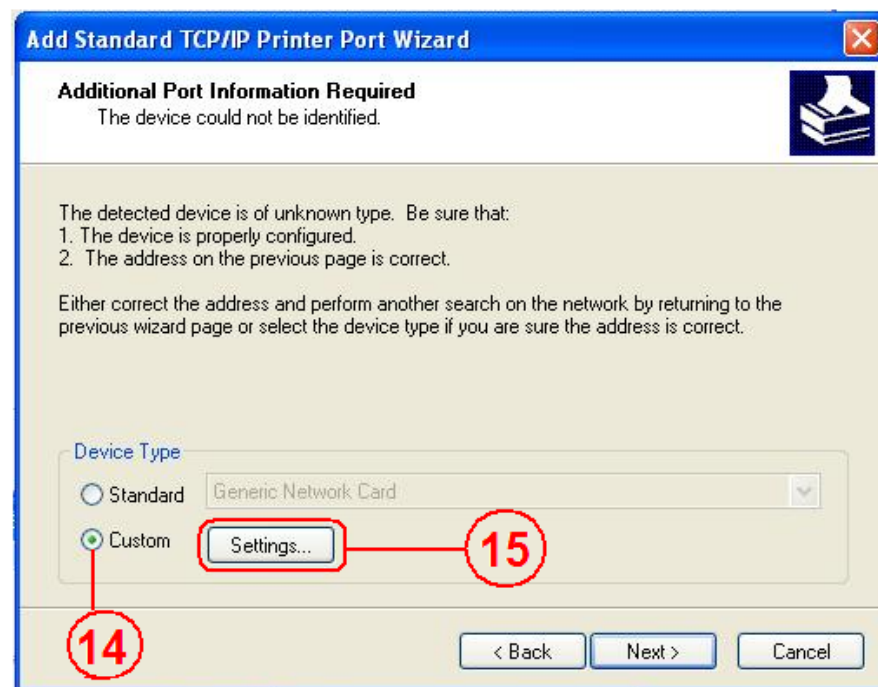


5. Enter the Turbo NAS IP address than click "next" to continue.



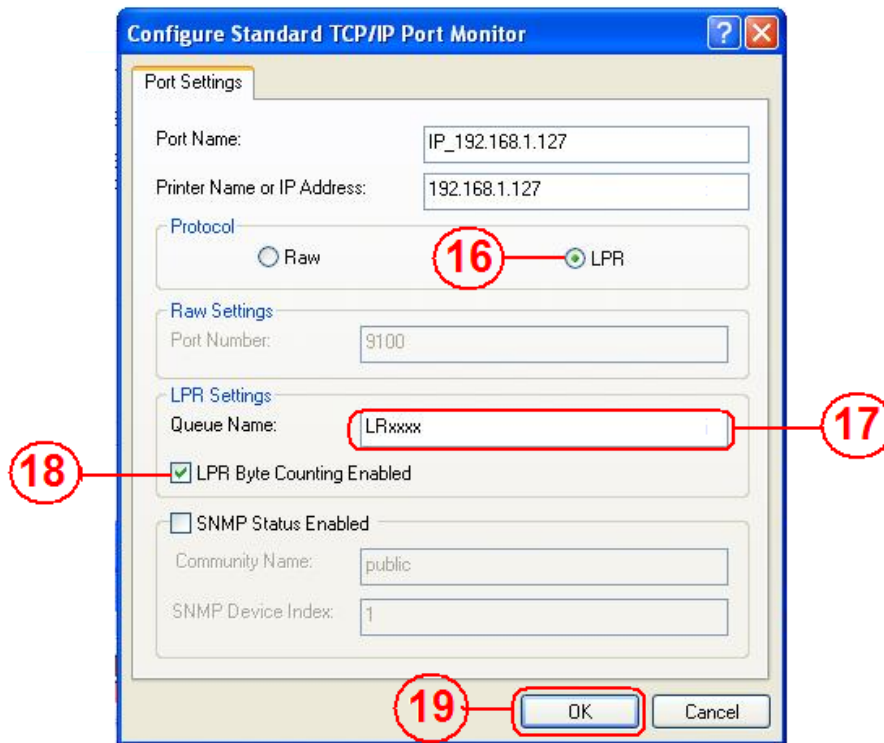


6. Select “**Custom**” and go to “**Setting**”.

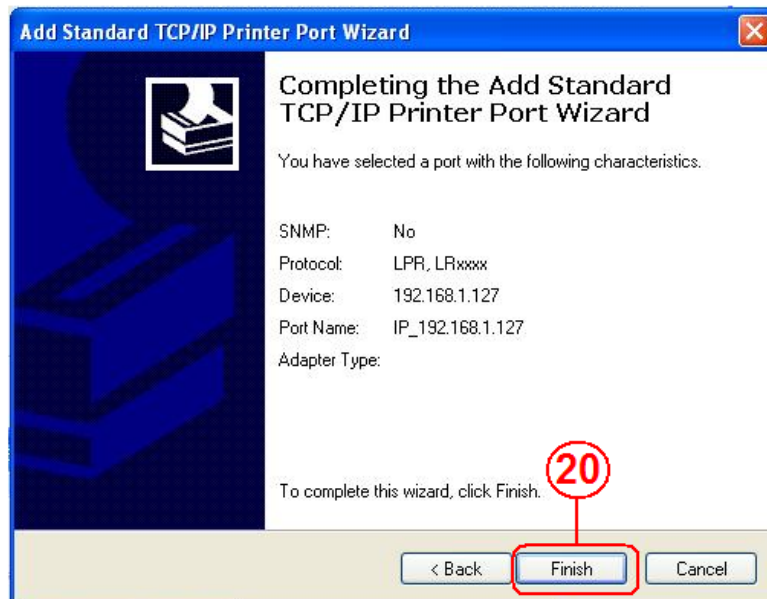


7. Select “**LPR**” in protocol, and give a queue name eg:LRxxx; select LPR byte enable and click “**OK**” to finish the port setting.

## One Bay SATA/IDE Turbo NAS



8. Click "Finish" to complete TCP/IP printer setup.



9. Go to "Printer server page and check printer server status. If status shows "OK", the printer is setting up successfully.

## One Bay SATA/IDE Turbo NAS

NAS

Network Attached Storage

Status

Identification

Date/Time

IP Config

Disk Utility

Maintenance

SMB Server

FTP Server

Media Server

Printer Server

BitTorrent

Printer Status

Status	OK
Manufacturer	EPSON
Model Number	480CX
Languages	

**Notes:** Turbo NAS Printer server does not support GDI/Host-based printers. For some Multi Function Printers (MFP); scanning functions might not be functional probably. Please contact the printer manufacture for detailed specifications.

## 9. Bit Torrent server

Turbo NAS supports Bit torrent download independently without using PC resource. Maximum of 4 bit torrent downloads can be running at the same time.

1. Select “**Bit torrent**” server, choose the “**Download Path**” you wish to use, then click “**Apply**” to save setting. (DO NOT change path setting while perform BT downloading, otherwise the downloaded job will be missing).

2. Server port range can be chosen from 6881 to 65535. (6881 is the default setting)

3. Create a upload speed limit: 0=unlimited upload speed (4 KBps is the minimum speed), and click “**Set**” to save setting.

**NAS**  
Network Attached Storage

**Bit Torrent Setup**

System ID: 52333238322d312e3138011223344555a9e881c

Number of the Downloads: 0

Download Path: admin (Apply)

Server Port: 6881 (Default:6881 Range:1025~65535) (Set)

Upload Limit: 0 (kB, Default:0 (unlimited))

Mail Notification: Mail Setup

**Upload Your Torrent File**

Torrent File: [Browse...] [Upload]

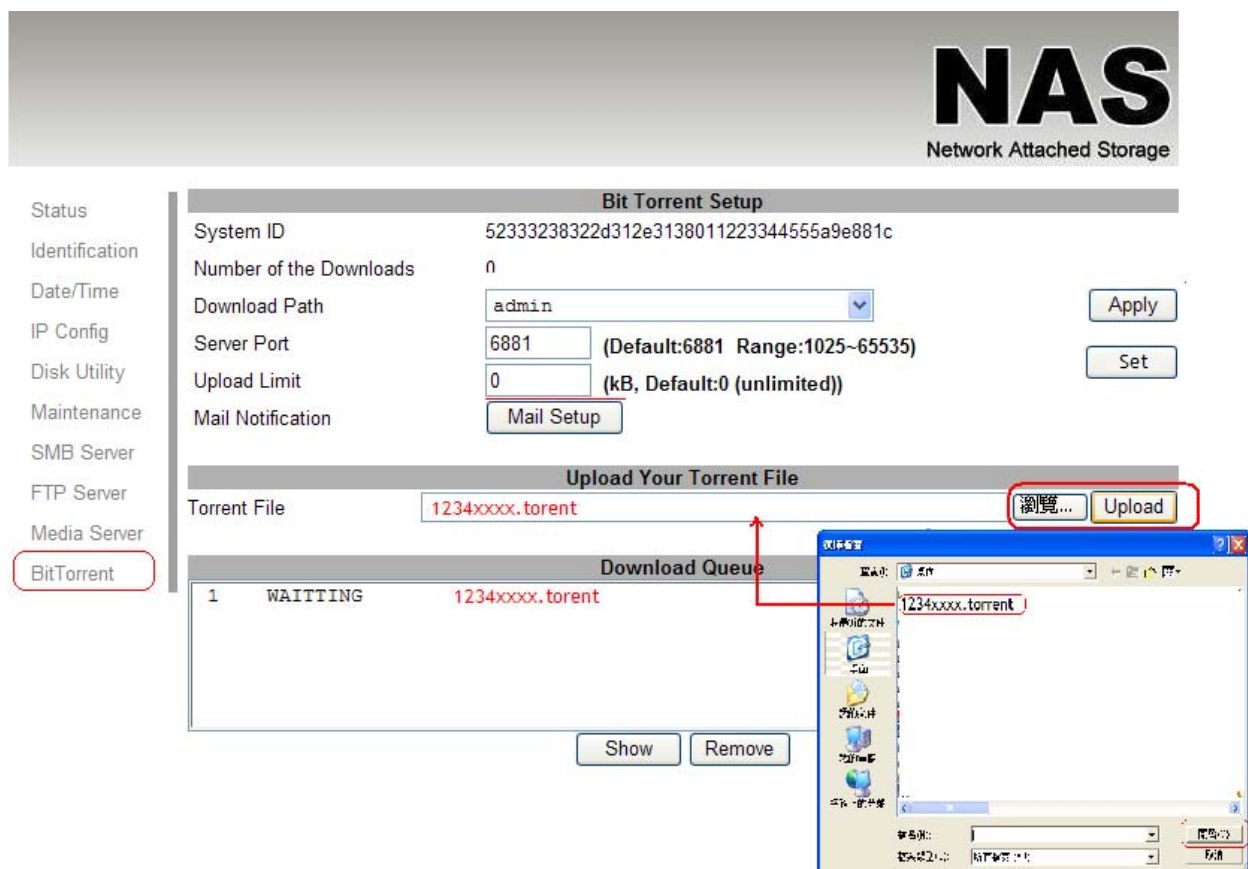
**Download Queue**

ID	Status	File Name
1	WAITING	20081111.torrent

[Show] [Remove]

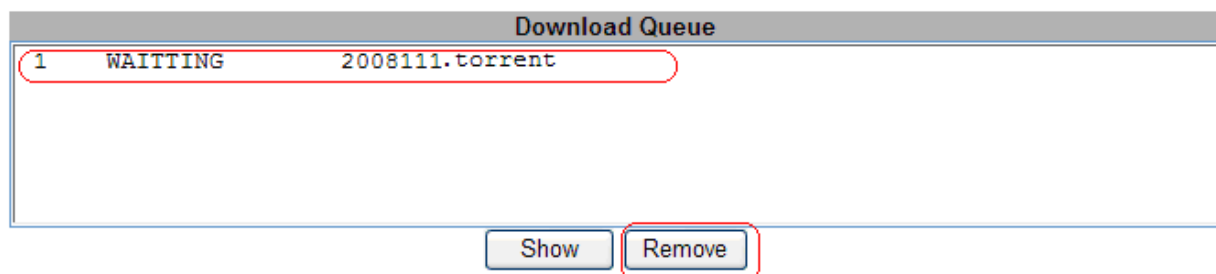
4. Click “**Browse**”, select .torrent file, and upload to the download queue.

**Note:** The jobs listed in the Download Queue will be removed when Turbo NAS is turned off or HDD is removed.



### 5. Delete BT jobs

After the download complete, click “Remove” to delete the download Jobs form queue window.



Note: Jobs listed in the “Download Queue” will be removed when Turbo NAS is turned off or HDD is removed.

### 6. Mail Notification

After the download is successful, an email will be send to designated email address. Click “**Mail setup**”, input SMTP server, recipient email, SMTP A/C, Password, and click “**Apply**” to save setting.

# NAS

Network Attached Storage

Status

Identification

Date/Time

IP Config

Disk Utility

Maintenance

SMB Server

FTP Server

Media Server

BitTorrent

BitTorrent Mail Notification

Enable☒

SMTP Server

abc@abc.com

Sender

Recipient

Evan@abc.com

Mail Authentication☒

User Name

Evan@abc.com

Password

.....

Apply

Return



## 10. Mac installations (Mac 10.5.4 or above)

Open Mac browser “Safari” and key-in the host name of the Turbo NAS (for example, “strage-0000”). It will detect Turbo NAS automatically.

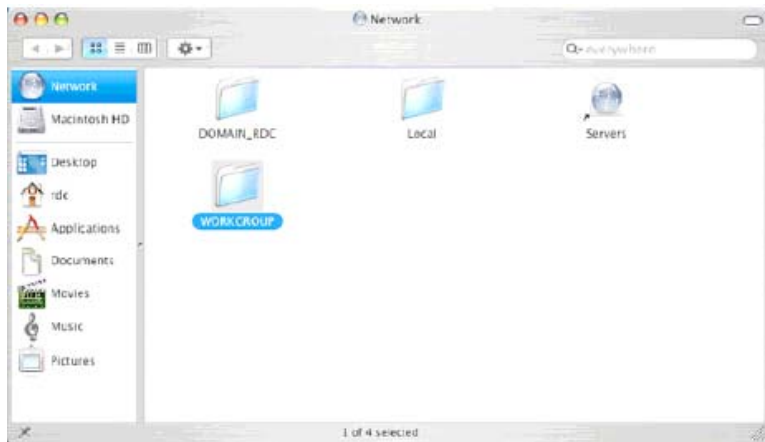


### 10.1 How to setup SAMBA in Mac OS X 10.5.4

1. Click “Go” on the toolbar, and select “**Network**” as the screenshot shown below.



## One Bay SATA/IDE Turbo NAS



2. Double Click “**WORKGROUP**” (or the correct group name of Turbo NAS), you will find Turbo NAS “**STORAGE-xxxx**” (or the correct name of Turbo NAS).

3. Click on the **storage-xxxx** (or the correct name of Turbo NAS).



4. Select the folder you wish to share, and click “**OK**” to share the folder

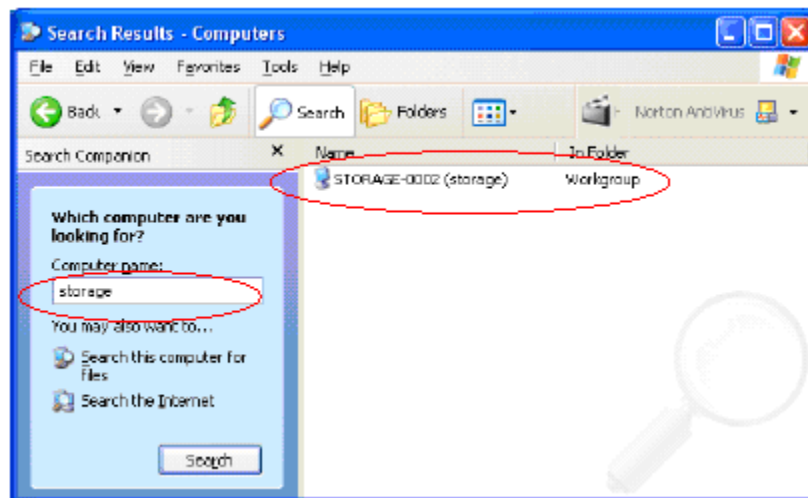


5. Click “**OK**” to show the folder in the Desktop.

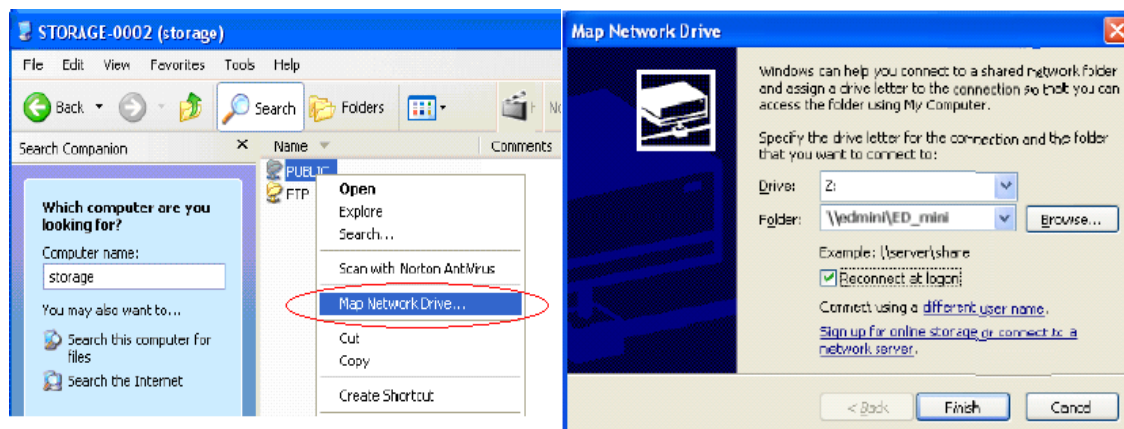


## 11. Map your Turbo NAS as a Network Drive

1. Press **“Start”** button on Windows desktop
2. Press **“Search”**
3. Select folders
4. Select Computer or people
5. Select a computer on the network and a new window will appear.
6. Key in the host name, (For example “storage-xxxx”) in the **“Computer name”** column and then press **“Search”** button. You will see the following window.



7. Point to the **“Storage-xxxx”**, double click the mouse. Choose the folder you wish to map, click mouse on its right button and click **“Map Network Drive”**.

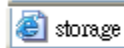


**Note:** For faster connection and usability, we recommend that you map folders which you use constantly as network drives. This creates a direct access to the shared folders on NAS from My Computer.

## 12. Q&A

### Q: What is Turbo NAS default IP?

A: The default IP address for Turbo NAS is 169.254.0.1 or enter “storage” in IE browser bar to search for it.



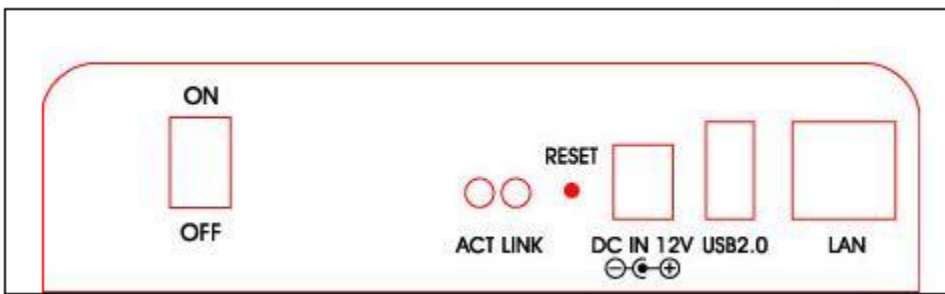
### Q: What is Turbo NAS default login name and password?

A: The Turbo NAS default Login name: “admin”, default password: “admin”.

### Q: Forgot my login password, How should I do?

A: Please follow the steps below.

1. Press the reset button and keep that position.
2. Unplug and reconnect the power.
3. Wait for 30 seconds, and then release the reset button.
4. Turbo NAS will go back to factory defaults.



**PS:** Only SAMBA/FTP account settings will remain in the Turbo NAS; others will go back to factory default.

### Q: Why can't I create/share folders in SMB or FTP server?

A: To avoid languages support issue, you are suggested to create/share folders with English characters only.

### Q: Why can't I upload the files via LAN connection or got disconnected?

A1: Please make you are connected to the network properly and you have the access right (read & write) for the folders.

### Q: How to setup Turbo NAS to be in daylight saving time?

A: Turbo NAS does not support Daylight saving time setting.

### Q: Why WinXP can not enter SMB folder with password via Turbo NAS?

A: Please update Win XP to SP2 or above. After update, please make sure if you have installed Norton Internet Security, if you do, please check with Norton service center.

### Q: What Operating Systems does Turbo NAS support?

A: Turbo NAS supports Microsoft Windows 2000 / XP / Vista and Apple Macintosh OS 10.5.4 above.

### Q: How do I access Turbo NAS via the Internet?

A: If your Turbo NAS is configured with a fixed public IP, please perform the following steps.

## One Bay SATA/IDE Turbo NAS

- Enter the management web base of Turbo NAS, and go to the FTP Server page to enable FTP Status.
- Create user account and limits of authority.
- Open Microsoft Internet Explorer or other FTP client software (recommended), and enter "ftp://Turbo NAS IP" in the IP address field.

### **Q: Why FTP can not link to Turbo NAS or show link time out when using IE?**

A: Due to IE FTP is not compatible with some routers, you are suggested to use FTP client software to start with. If you would like to use IE FTP to link to Turbo NAS, please refer to following steps:

- Please open port 21 and 20 on Router and link to Turbo NAS.
- Open IE > Tool > Internet Options>Advance
- Click "Enable folder view for FTP site" and click "OK"

### **Q: Why my FTP client software can not link to Turbo NAS or fail during file transfer??**

A: Due to software design, it's possible that certain FTP software is not compatible with Turbo NAS.

**Turbo NAS is now tested with most of popular FTP client software such as CuteFTP or SyncQuick FTP software.**

### **Q: What is the limitation of user to login FTP and Samba server?**

A:

Samba Server	User Level Access (maximum create 16 user accounts, 16 folders shared by one account)
FTP Server	maximum create 16 user account, 16 folders shared by one account
Maximum User Login	FTP 8 User/Samba 8 User (Total 64 TCP connection at the same time)

### **Q: Any limitations for Turbo NAS file name length?**

A: The limitation of length of file folder is 12 bytes.

### **Q: What can DHCP do as well with Turbo NAS?**

A: You can setup Turbo NAS as a DHCP server if there is no any other DHCP Server exists in your local network. Otherwise, Turbo NAS will automatically turn off its DHCP server function and become a DHCP client. For example, if you have installed a router with built-in (activate) DHCP Server, Turbo NAS will automatically setup itself as DHCP client.