

One Bay SATA /IDE Turbo NAS



Product Overview:

SATA/ IDE Turbo NAS server is a function-friendly and cost-effective storage solution. Offering all-in-one NAS server function for SOHO and personal users to save, backup, manage, and data sharing.

Bundle with SyncQuick™ NAS Manager software, support easy search, scheduling data backup functions, provide a hassle free operation experience for both beginner and power users.

Features



File Server (SMB)

Allow server manager to create user ID and password and define the authority for each user.



FTP Server

Allow user to manage the access authority of the FTP server and share files with friend through internet.



USB Printer Server

Share USB printer over network by simply connecting USB printer to NAS USB port.



XBOX 360/PlayStation3 Media Server iTune Music Server

Work as media center when connected with XBOX 360/PlayStation3 and iTunes.



Bit Torrent download engine

Work as a continuous Bit Torrent download center without turing on your PC.

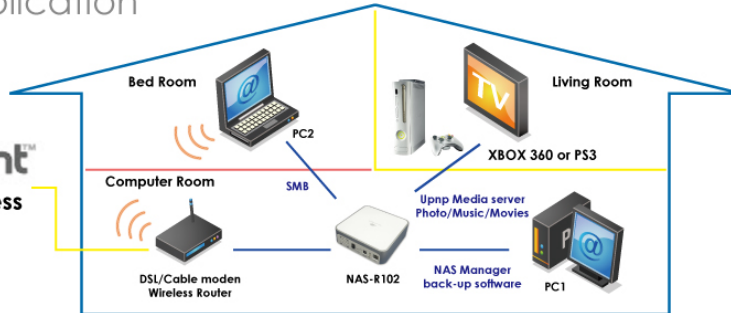


Sharing files accross Windows, Mac, Linux

Designed for different users to share files accross the Windows, Mac, Linux environment.

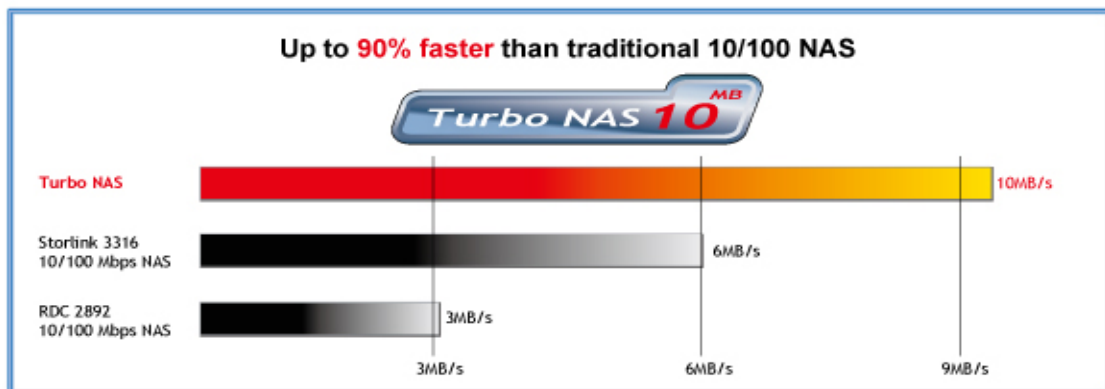
Turbo NAS Application

Turbo NAS Application



High speed throughput

Embedded with 32bit high performance SOC support transfer speed up to 10MB/s; 2 times faster than the traditional NAS in the market.



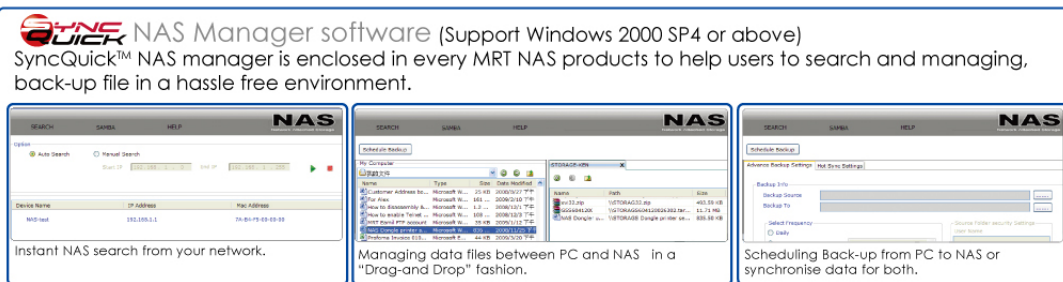
Support both IDE (ATA) and SATA Hard Disk



NAS Manager Software (Support Windows 2000 SP4 or above)

SyncQuick™ NAS Manager is enclosed in every MRT NAS products to help users to search and managing.

Back-up file in a hassle free environment.



Specification

USB

ETHERNET

FAT 32

Model:	One Bay SATA/IDE Turbo NAS
Interface/ ports:	USB2.0/ LAN (10/100)
LED Display	Power/ Action/ Link
Data transfer rate:	Average 8-10 MB/s
Supported Server	SAMBA/ FTP/ DHCP/ Printer/ UPnP Media server/ Bit torrent (client)
Supported Protocol	TCP/IP, USB2.0,
Supported Windows O/S	Windows98SE, Me, 2000, XP, Vista / MAC OS X /Linux and Unix(SAMBA/FTP)
Support HDD interface:	SATA I/II and IDE (ATA)
Support HDD capacity	Up to 2TB
Support system file	FAT32 Compatible
Single file support	Up to 127GB (over FAT32 4GB limitation)
Product Dimension	160 (W)x 160(D)x50 (H) mm (main body)
Weight	485 g
Operation Environment :	0 – 35 degree C
Storage Environment:	0 – 50 degree C
Certification:	CE, FCC
Package contain:	1x SATA /IDE Turbo NAS 1x RJ45 LAN Cable 1x12V 2A Power supply 1x CD utility (include user's manual & SyncQuick™ NAS Manager)